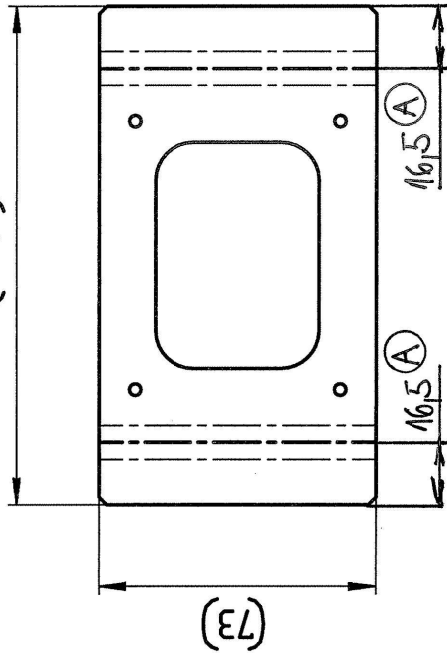


Abwicklung
FLAT PATTERN
1:2

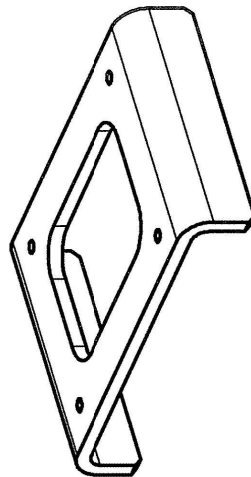
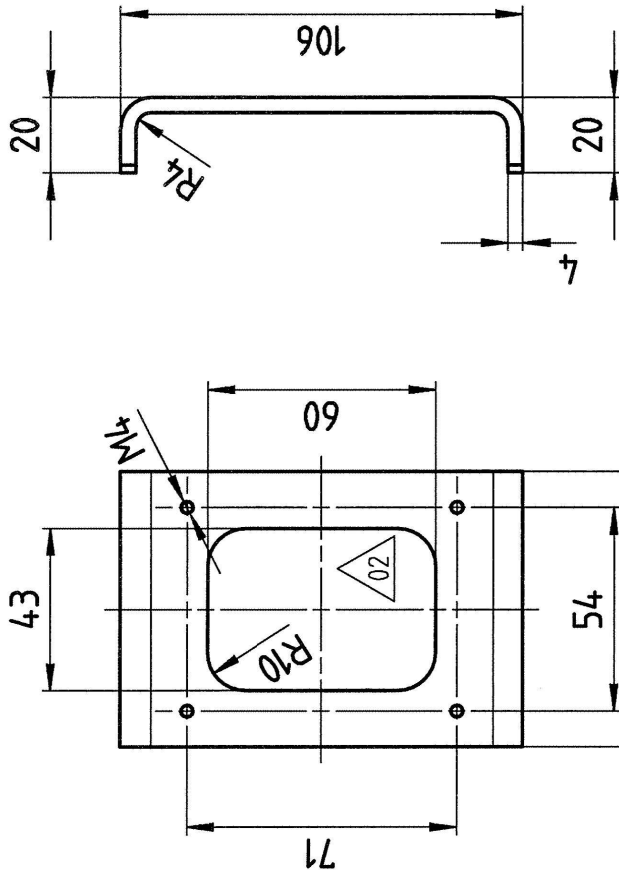
(132,1)



(73)

16,5 (A)

16,5 (A)



Achtung:
Fertigmaße sind verbindlich.
Die Abwicklung muss dem
Kantverfahren angepasst werden.
IMPORTANT:

FINISHED DIMENSIONS ARE BINDING.
THE FLAT PATTERN MUST BE ADAPTED
ACCORDING TO THE EDGE METHOD.

Ⓐ - N214/00705 - DOPLNĚNÍ OS CHYBU.
28-05-2014
22.5.2014 *gug* ARCHIV

Ohne Beschichtung
KWN 2186915
 $B_{100} \sqrt{\quad} = \sqrt{\quad}$

1

Schutzvermerk ISO 16016 beachten / Copyright reserved ISO 16016

Material		ECN-No.	Part No.	Rev.-No.	Status	Version
ISO 2768	T1/T2	m/K	28634	4512193 / 02	SF	S-Freigabe
EN ISO 13920	BF					
ISO 8062	CT10		2303296	01		
EN ISO 9013	111					
EN ISO 1101						
EN ISO 1302						
Blech Gewindeplatte Not-Aus						
Threaded metal plate emergency stop						
KWN 2188113		Theo. Weight	0,225 kg	Scale	1:2	Format
		First Use	K077	First Use	1:2	Sheet-of
						1 / 1

KWN 2188113